

PORTA FOLIO.



Diseño Gráfico

MKT Estratégico • Consultoría

Conceptualización

UI/UX • Branding

Madesa

General Marketing

Digital Strategy

Consulting

Branding

Video Editing

Social Media

Graphic Design

UI/UX

Contáctanos: 2522-5300 Escribenos Sucursal Central ESP

MADESA EXPERTOS EN MATERIALES ELÉCTRICOS

Inicio Catálogo Soluciones Noticias Nosotros

¡COTIZA YA!



30+ años de Experiencia y Calidad

En MADESA nos preocupamos por garantizar la satisfacción de nuestros clientes, por lo que día a día nos adaptamos a las nuevas tecnologías, sin dejar de lado la calidad que nos ha representado todos estos años y así proporcionarle a los salvadoreños los mejores productos para sus proyectos eléctricos.

- 500+** Proyectos completados
- 25+** Proveedores
- 100%** Clientes Satisfechos

[VER PRODUCTOS](#)

MADESA is a major company in the industrial electrical sector with annual sales exceeding \$5M at the end of 2022. It aimed to surpass \$10M by the end of 2023. Thanks to a combined digital marketing and commercial follow-up strategy, this goal was exceeded in 2023, and by the end of 2024, the target is to surpass \$15M in annual sales.



Calidad y Excelencia



El servicio está en nuestro ADN. En MADESA nos preocupamos por garantizar la satisfacción de nuestros clientes, por lo que día a día nos adaptamos a las nuevas tecnologías, sin dejar de lado la calidad y excelencia que nos ha representado todos estos años.

2522-5300 [¡Contigo en cada proyecto!](#)

www.madesa.com.sv

MADESA EXPERTOS EN MATERIALES ELÉCTRICOS

CONDUMEX

Conduciendo la energía de tus sueños

688



Leads

\$33,020.10

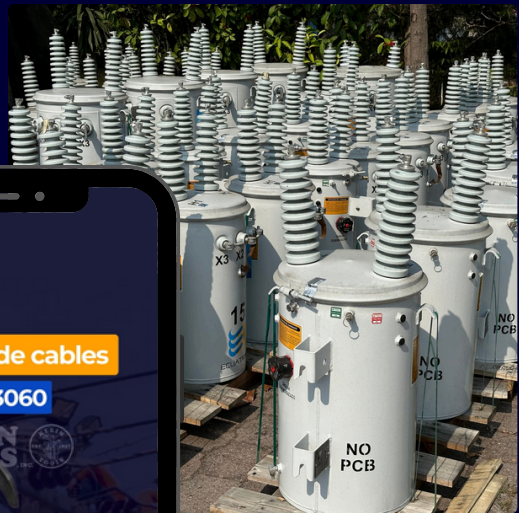


Quarterly Sales

\$555



Quarterly Digital Investment



Cables Conductores Accesorios

Variedad de calibres, colores y medidas

Cotiza con nosotros 7468 3610

Llave de liniero 3146

Cortador de cables ID: 63060

Multímetro digital rango TRMS 600V temperatura MM420

Multímetro digital rango automático TRMS 600V temperatura MM420

MM420

Cotiza con nosotros: 7468-3610

Llave de liniero 3146

Cotiza con nosotros: 74683610

Cotiza con nosotros: 7468-3610

Cotiza con nosotros 7468 3610

NICOPRESADORAS

¡Damos la bienvenida a Ilukon, una nueva incorporación a nuestro catálogo de luminarias en MADESA!

¡Damos la bienvenida a Ilukon, una nueva incorporación a nuestro catálogo de luminarias en MADESA!

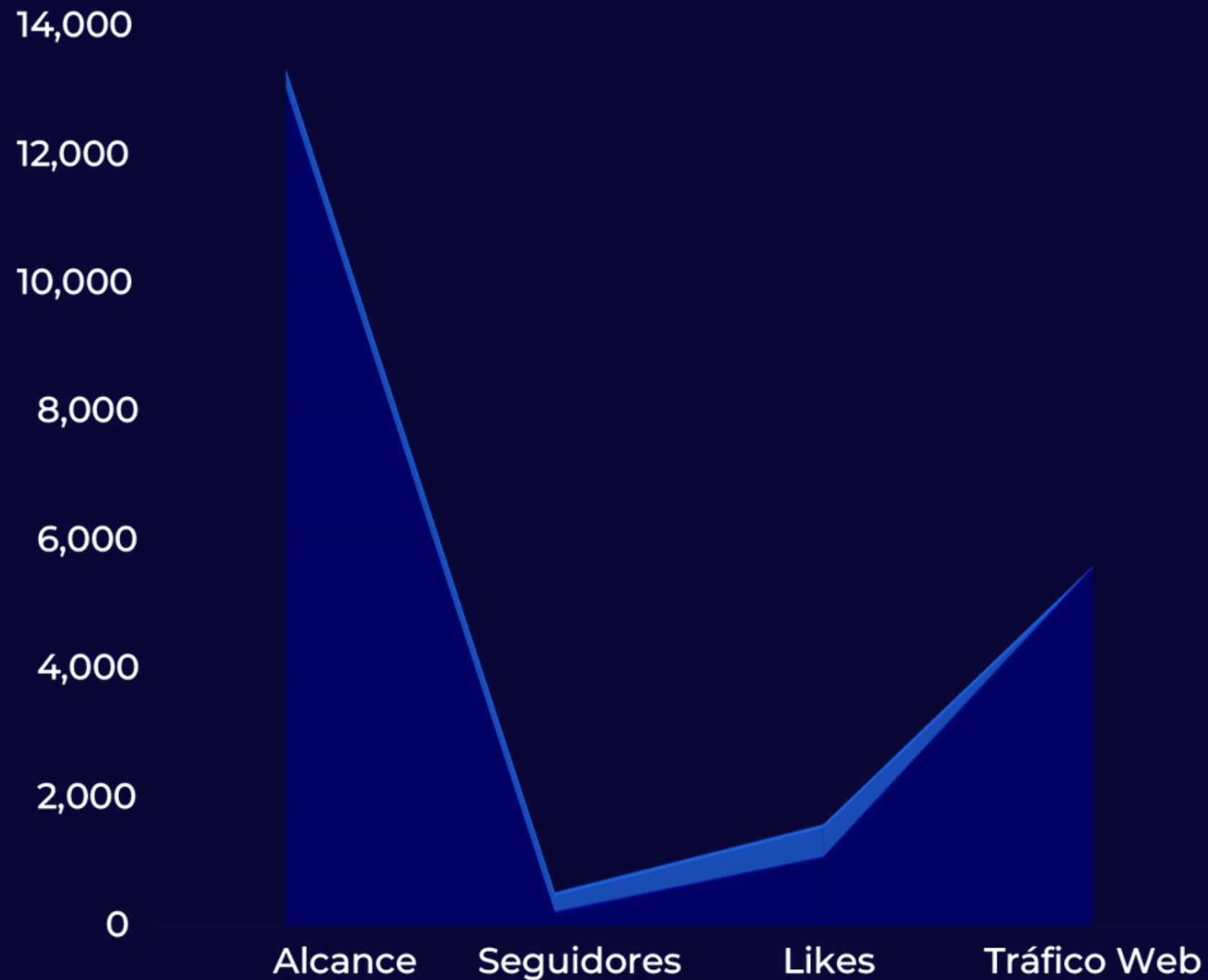
Cotiza con nosotros 7468 3610

CALIDAD + DURABILIDAD

¡Damos la bienvenida a Ilukon, una nueva incorporación a nuestro catálogo de luminarias en MADESA!

MADESA + ILUKON EXPERTOS EN MATERIALES ELÉCTRICOS PROFESIONAL LIGHTING

Data from the first quarter of 2024



13,000



Reach

250+



Followers

3,200



Likes

5562



Traffic








Trending

30M+ Views

MADESA
EXPERTOS EN MATERIALES ELÉCTRICOS

Trending

 **WATCH NOW**



**NO CONFIÉS
EN PRODUCTOS
SIN CERTIFICACIÓN**

MADESA
EXPERTOS EN MATERIALES ELÉCTRICOS

**DON'T TRUST
UNCERTIFIED PRODUCTS**

 **WATCH NOW**



MADESA
EXPERTOS EN MATERIALES ELÉCTRICOS

General

**Madesa
General**

 **WATCH NOW**



CHAINWORK

Chainwork

Web App Development - Design

Landing page

Framework Structure

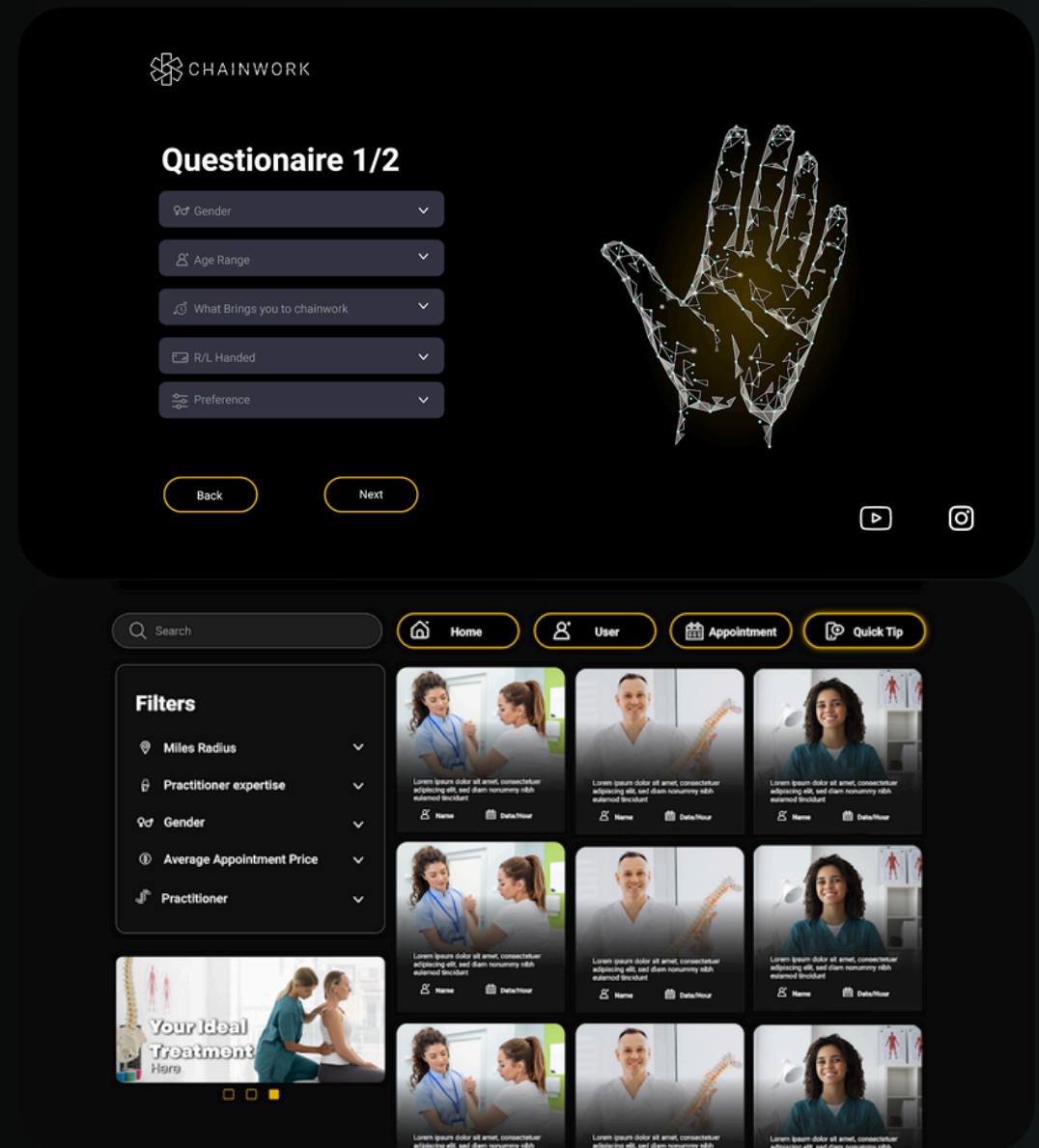
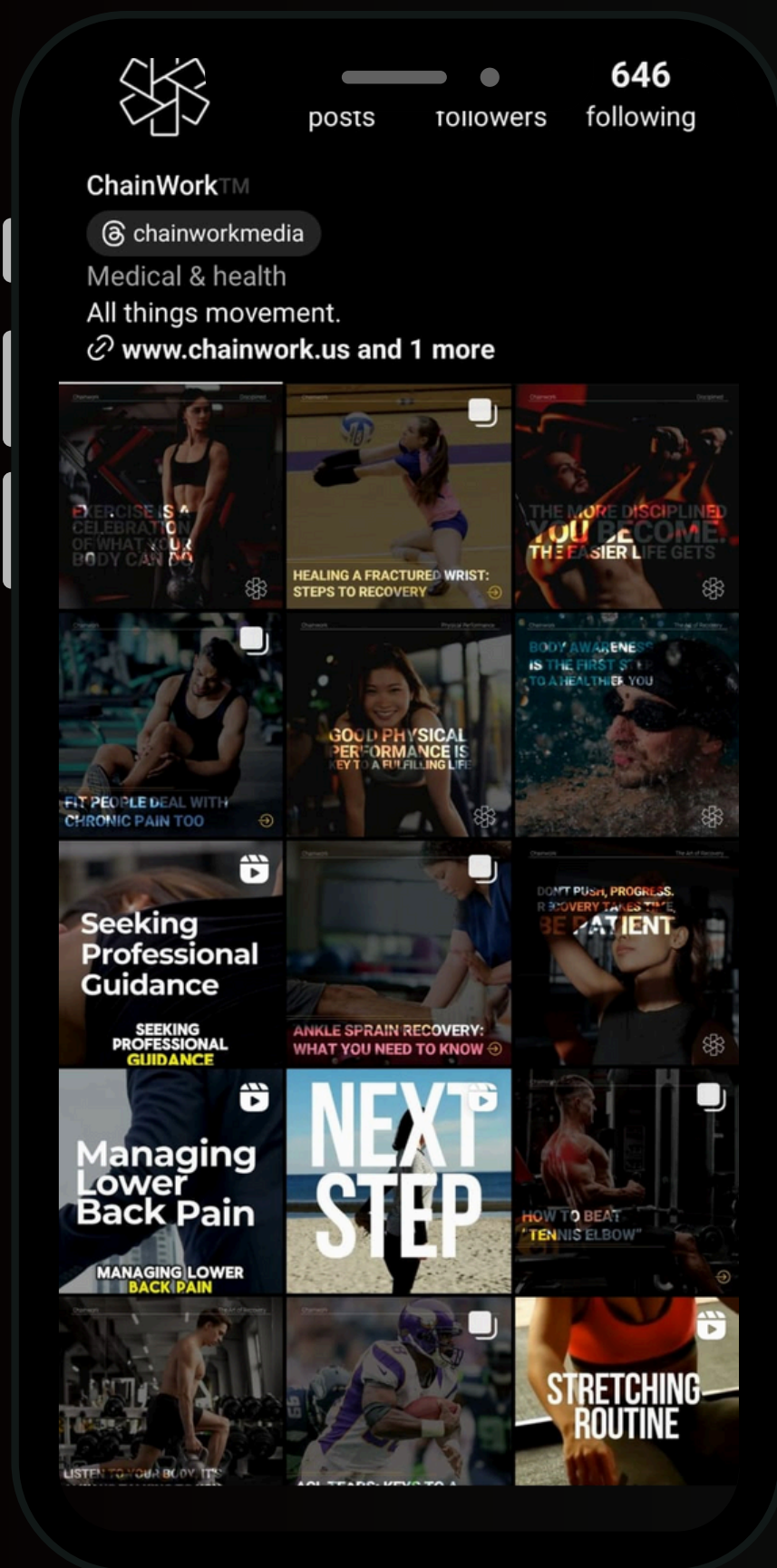
UI/UX

Video Editing

Graphic Design

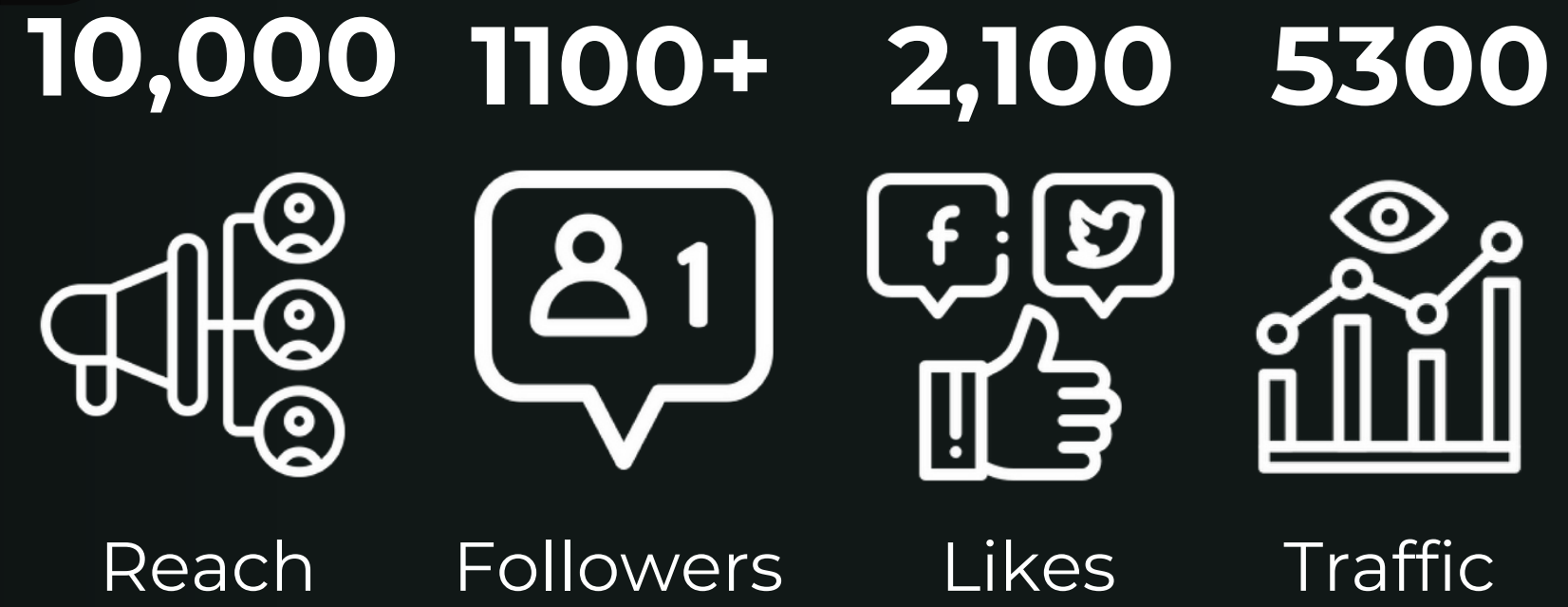
Brand Development

Social Media



Rapidly expanding network of health FITNESS enthusiasts AND MSK health professionals. Streamlined access to experts who can offer actionable guidance and proven treatment methods.

Learn how to minimize injury risk while exercising. Collaborate with a professional of your choice to create a fully customizable rehab and performance gameplan to meet your specific goals.



Digital Ortho On-Demand

Welcome to the rapidly expanding network of health enthusiasts taking ownership of their MSK experience with access to on-demand injury advice and body recovery techniques.

What's Chainwork? →



Password Setup & Email Verification

🔒 Password

🔒 Confirm Password

✉️ Enter Email Code

Back

Next



🔍 Search

My Workspace

📖 Go to Courses

Slider

Labs

- Lab**
Lorem ipsum dolor sit amet, consectetur adipiscing elit, sed
- Lab**
Lorem ipsum dolor sit amet, consectetur adipiscing elit, sed
- Lab**
Lorem ipsum dolor sit amet, consectetur adipiscing elit, sed
- Lab**
Lorem ipsum dolor sit amet, consectetur adipiscing elit, sed

Create post

Initial post:
- The case the creator made about it (Why is it important).
- Proven method recommended by whoever posted it (What do they recommend to do about it).

🔖 View

Lab

Lorem ipsum dolor sit amet, consectetur adipiscing elit, sed diam nonummy nibh euismod tincidunt ut laoreet dolore magna aliquam erat volutpat. Ut wisi enim ad minim veniam, quis nostrud exerci tation ullamcorper suscipit lobortis nisl ut aliquip ex ea commodo consequat. Duis autem vel eum iriure dolor in hendrerit in vulputate

Create post

Initial post:
- The case the creator made about it (Why is it important).
- Proven method recommended by whoever posted it (What do they recommend to do about it).



Username
user@email.com

✎ Edit

🔔 Notifications



⚙️ Support

Congratulations!

You have created a course



↩️ Return

Let's get in touch

Text explaining that users can contact Chainwork or simply review the knowledge base.

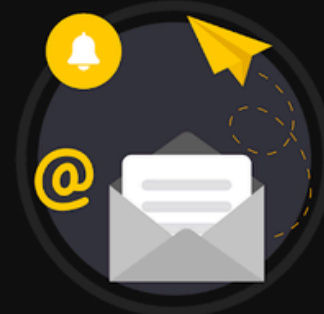
Name

Name

Name

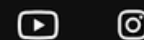
Name

Send



Contact info

Knowledge Base



Questionnaire 2/2

📄 Type of Clinic

🏠 Areas of Expertise

📄 Certifications

📄 Tax ID

📄 Professional Liability Insurance

📄 Professional Board License

Back

Next





THE ART OF STRETCHING

The Art of Stretching

[WATCH NOW](#)



ERGONOMICS

Ergonomics

[WATCH NOW](#)



JIMMY BUTLER'S MCL INJURY

Trending
+2700 vistas

Jimmy Butlers
MCL Injury

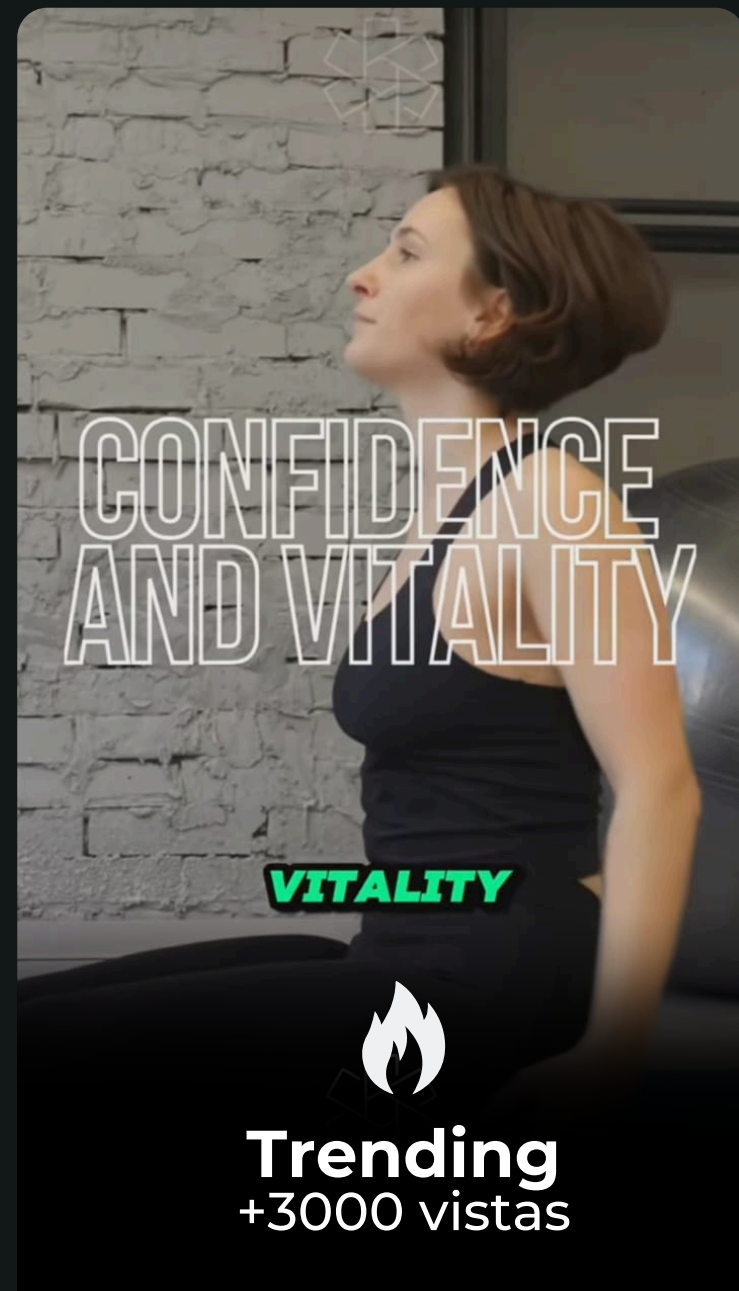
[WATCH NOW](#)



THE GAME MINDSET

The Game
Mindset

[WATCH NOW](#)



CONFIDENCE AND VITALITY

VITALITY

Trending
+3000 vistas

Stretching

[WATCH NOW](#)



Latinoamérica

Western Union

Marketing Campaing

Graphic Design

Conceptualization

MKT Strategy

Persona Dev.

Así cuidas de ellos

Envía dinero hoy a los tuyos
con \$0 costos de transferencia al
usar nuestra App*

Descarga la app ahora

Promoción válida hasta el 31 de mayo de 2023.



Aprovecha

\$0 CLP
de tarifa de envío al usar la App*

Envía dinero hoy

*Promoción válida hasta el 31 de mayo de 2023.



Western Union

**Porque así
estás con
ellos**

Envía dinero hoy a los tuyos
con \$0 costos de transferencia
al usar nuestra App*

Descarga la app ahora

Promoción válida hasta el 31 de mayo de 2023.



Enviar dinero nunca había sido tan fácil

Envía dinero a Colombia con \$0 costos de transferencia al usar nuestra App

Descarga la app ahora



 Western Union

 Western Union

Aprovecha

\$0 CLP
de tarifa de envío*



Cobertura
+200 países



Transfiere
directo a cuenta
bancaria



Seguimiento
de Transferencia

Promoción válida hasta el 31 de mayo de 2023.

Mobitel

E-commerce development - Design

E-commerce

Framework Structure

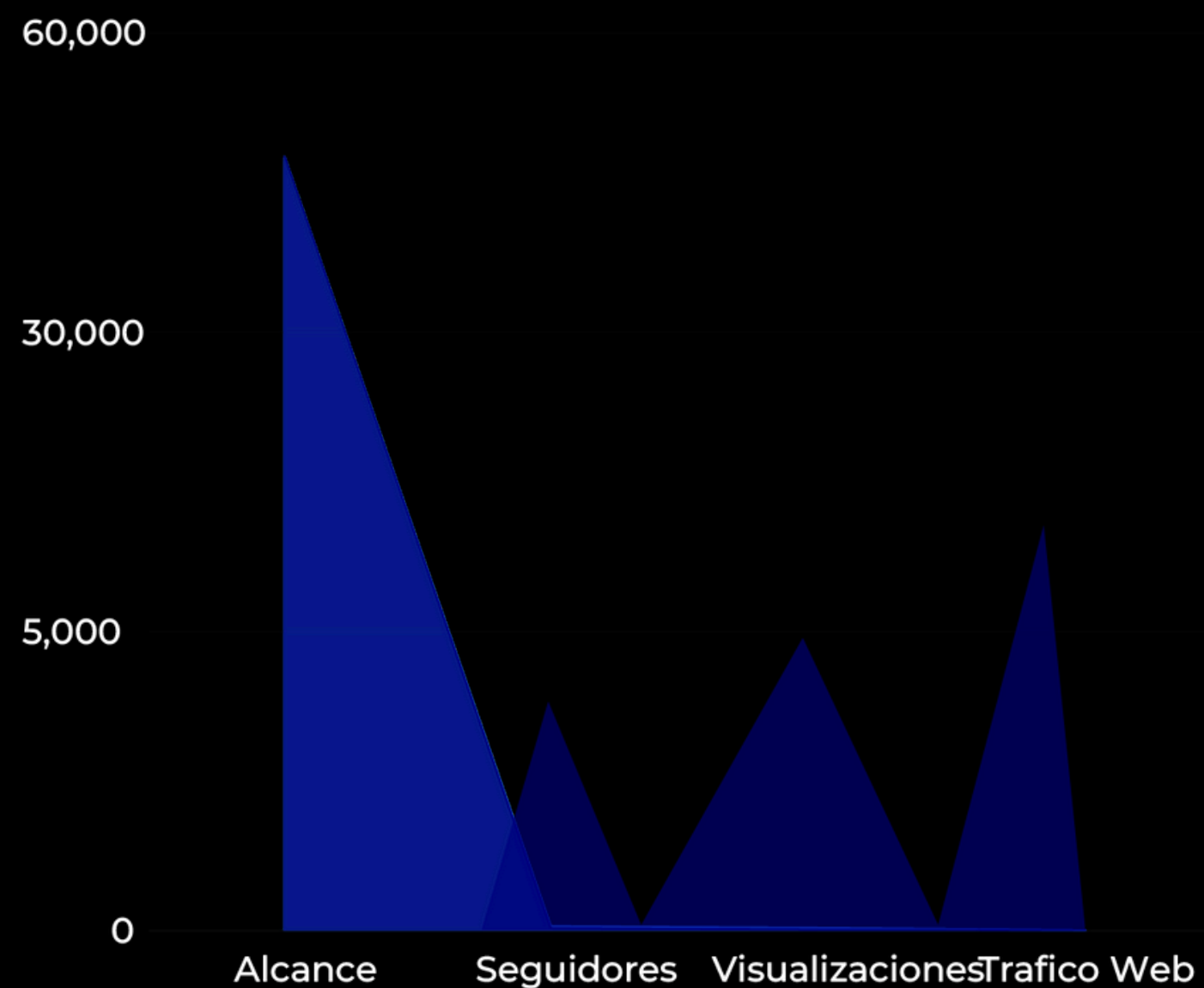
UI/UX

Video Editing

Graphic Design

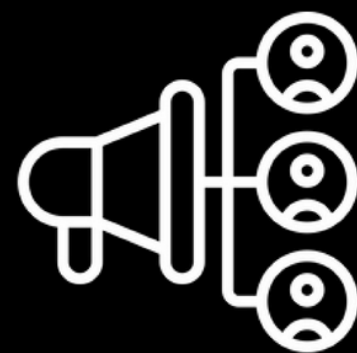
Brand Development

Social Media



During our management, Mobitel's perception grew significantly compared to its historic zero, as we have developed this brand from the beginning. Here is the data:

51,744 **1,720+** **5,000+** **6,000**



Reach



Followers



Likes



Traffic

#2

Web Development

Mobitel is a U.S.-based company located in Lexington, KY. By October 2022, it was focused on payment points and software for small and medium-sized businesses. In November 2022, we were hired to create a website for marketing technological products, stemming from a new partnership the company secured that same year.



**LARGE MONITORS FOR
BIG PROJECTS**

[VIEW MORE](#)



**UP TO
45% OFF**

Laptops & Notebooks
at unbeatable prices

[SHOP NOW](#)



**BOOST
YOUR DAILY**

SMART WATCHES STARTING AT \$32

[SHOP NOW](#)



**UNBEATABLE PRICES
FOR OFFER HUNTERS**

SHOP BEST HEADPHONES NOW

**GAME OVER
IS NOT AN OPTION**
PURCHASE GAMING GADGETS

WANT TO GO

Sign in For The Best Experience
SIGN IN SECURELY

New to Mobitel? **SIGN UP!**

🎮 Get Your Ultimate Xbox Gaming Combo! 🎧

Calling all gaming enthusiasts! We have an incredible offer that will take your Xbox gaming experience to the next level. Introducing our Xbox Combo Deal, packed with everything you need for an immersive gaming adventure! games, controller, monitor and headphones. go to: mobitelstore.com/

#... See more

R.R.S.S.

POINT & SHOOT TO BIG DEALS

Xbox Series X Halo Infinite
Multiplayer | Blu-Ray |

Big deal **\$60**

Mobitel

Microsoft Xbox Elite Controller
Adjustable Tension Sticks | Wireless | Interchangeable Components

Big deal **\$172** Retail ~~\$180~~

Mobitel

Adesso Xtream G1
Noise Cancelling Microphone | Volume Control | LED Lighting

Big deal **\$30**

Mobitel

Lenovo Q24H-10 Monitor
23.8" | LED Backlight | Low Blue Light

Big deal **\$305** Retail ~~\$326~~

Mobitel

Mobitel Store
April 23 at 12:00 PM · 🌐

🎧 The Adesso Xtream P600 Multimedia Bluetooth Headset with Microphone are lightweight, stylishly designed for active lifestyles. 🎮 keep your games with the best audio quality only in mobitelstore.com/ 🟢

#Mobitel #gamers #Headphones #adesso #sale

POINT & SHOOT TO BIG DEALS

Big deal **\$59.99** Retail ~~\$63.73~~

Mobitel **Adesso BT Headphone-Mic**
Noise Cancel | Bluetooth | 3.5mm AUX

Mobitel Store
April 13 · 🌐

🎧 Upgrade your digital experience with the Asus Celeron N4020 🌐. Get it now at Mobitel's online store for enhanced performance and efficiency. mobitelstore.com/

POINT & SHOOT TO BIG DEALS

Big deal **\$323.67** Retail ~~\$344.96~~

Mobitel **Asus Celeron N4020 4G**
15.6-inch | AI Engine | 2.6 GHz burst frequency



Estados Unidos

IBG Truck Parts

Marketing Campaing

MKT Strategy

Conceptualization

Design

Persona Dev.

Web Page



FREE SHIPPING
ON ALL ORDERS

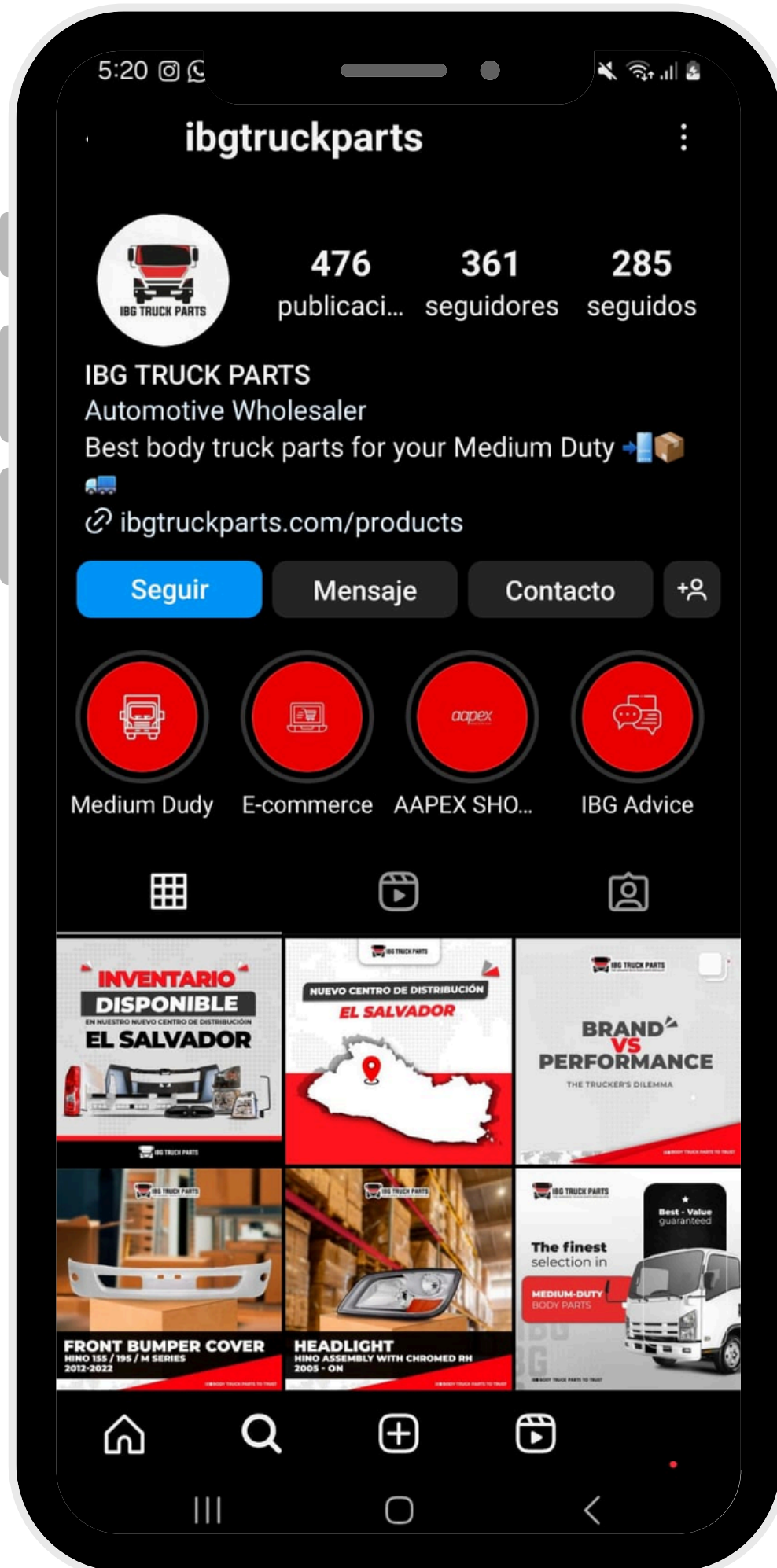
SHOP NOW

SHOP BY CATEGORY

Best Selection In Aftermarket Parts

Best quality aftermarket parts for your Hino and Isuzu medium-duty trucks.





Report for Feb 1, 2024 - Feb 23, 2024

Compared to Jan 1, 2024 - Jan 23, 2024 (23 days)

[Print report](#)

[Download](#)

Total sales (Includes taxes)

\$8,374.58

▲ 116.8% vs. prior time period

Taxes and fees

\$0.00

Collected by seller

Taxes and fees

\$597.08

Collected by eBay

Selling costs

\$1,170.29

14.0% of your total sales

Net sales (Net of taxes and selling costs)

\$6,607.21

▲ 115.9% vs. prior time period

Quantity sold

53

▲ 76.7% vs. prior time period

Avg. sales price per item

\$158.01

▲ 22.7% vs. prior time period

Sales via Auction

\$0.00

0.0% vs. prior time period

Sales via Fixed Price

\$8,374.58

▲ 116.8% vs. prior time period

Sales Snapshot taken at 2/23/2024, 3:04:31 PM PST

Total order items
61

Units ordered
62

Ordered product sales
\$8,779.87

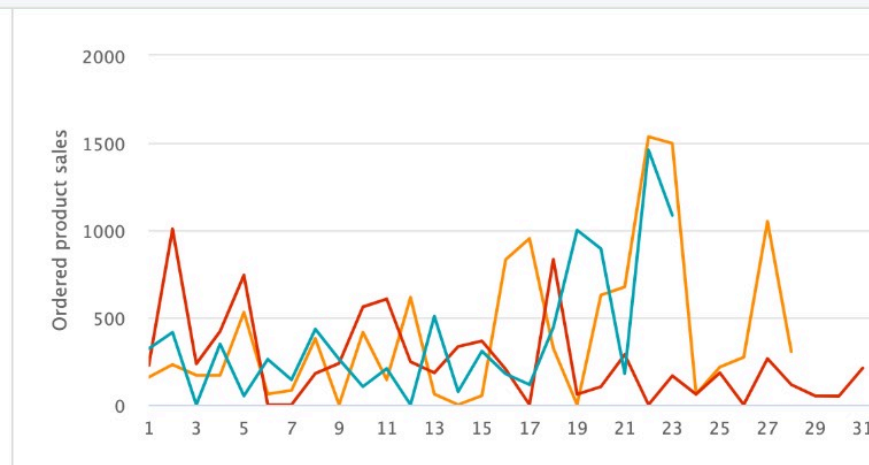
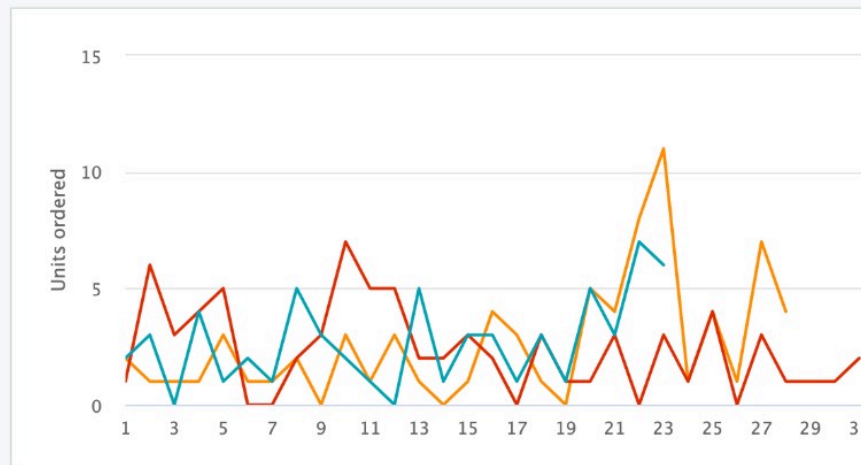
Avg. units/order item
1.02

Avg. sales/order item
\$143.93

Compare Sales

[Graph view](#)

[Table view](#)



Compare
[What's this](#)

This month so far
So far
62 Units
\$8,779.87

Last month
By end of month
74 Units
\$7,919.53

Same month last year
By end of month
74 Units
\$11,407.48



\$6,607.21

115.9% Growth in sales compared to the previous month



\$8,779.87

10.86% Growth in sales compared to the previous month



IBG TRUCK PARTS
THE JAPANESE TRUCK BODY PARTS SPECIALIST

Thanks to the implementation of personal development and sales optimization strategies by Eon Consultant at IBC Trucks, significant revenue growth was achieved.

\$21.4k

First Quarter
Revenue

80%

Online Sales
Increase



Estados Unidos

LandQuire

Brand/ web / Documentation Development

Desarrollo Web

Redes Sociales

Mobile responsive

Consultoría

MANAGED PROPERTIES

75+

INVESTMENT PORTFOLIOS CREATED

13

EMAIL MARKETING RAISED INVESTMENT FUNDS

\$200k

REVIEWED PARCELS

1.45 M

COUNTIES PURCHASED

91

CASH OFFERS SENT

1.25M

ACROSS THE UNITED STATES

LQ has purchased and titled land parcels in various areas

31/50 States

FULL SCOPE

Major Planned Urban Development (PUD) Requests

14 2022 y 2023

INVESTMENT OFFERS

>130 Investment Offers

Since 2021, an average of >600 Investors

WE HAVE GROWN

\$30M CAPITAL INVESTED

Land purchases made with an average arbitrage margin of 40% to 55% compared to market value at the time of purchase

LQ HAS MINIMAL CORPORATE DEBT

<\$700K @ May 2024

LandQuire is a solid company with strong capital resources and a history of over 1,000 land acquisitions, demonstrating reliability and capability to sellers.

FEATURED PARTNERED

FUNDED IN 7 DAYS

\$185,000

LQPF7 – 2 Parcels In Alabam...
United States, Alabama, Texas, , ,

21.3 Acres | 17.30% ROI% | 365 days Completion

LQ Portfolio 7
Listing ID

English

LandQuire Home Available Deals Successfully Partnered Sold Our Team Log In Register

Diversify Your Investment.

Go back to the land. Invest in the best asset for appreciation, diversification & resilience against inflation.

Start Investing Who We Are?

3 Residential Lots - LQPV28
Colorado & South Carolina
\$2.41 acres Residential 15.09 ROI%
Funding Partner for \$143,000
Timur Chase \$40/h
Timur Chase \$40/h



SERIES A INVESTMENT

LandQuire Poised for Growth
New Opportunity for our Investors

Investment Series A / Corporate Equity

Entity LandQuire Management LLC

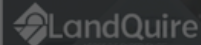
Placement SPV LQM Series A Charter LLC

Capital Raise \$3,500,000

Equity Exchange 10.6%

Valuation Multiple 10x EBITDA

Forward 12 Months Valuation \$33,200,000



FEATURES OF THE INVESTMENT

LandQuire
\$3,500,000
Capital Raise

Features of the Investment:

Name: LQM Series A Charter LLC
Domicile: Florida
Offering: Regulation D, 506b Exemption
Raise: \$3,500,000
Investment: \$100k minimum
Open Offering: January 2022
Intake: Capital Calls @ Each Month-End up to Total
Close Offering: At \$3.5M capital raised or at LQM Discretion
Purpose: Series A equity investment into LandQuire Management LLC
Parties: Up to 35 Investors @ Maximum
Participation: 10.6% Corporate Equity pro rata per Investor
Term: Open
Exit: At Liquidity Event
Public/Private: Private

VALUATION & FINANCIAL ANALYSIS

2022 and 5-Year Progression

TERM	EBITDA	MULTIPLE	VALUATION	% VALUATION +/-
2022	\$ 3.3M	10x	\$33.2M	-0- Forward 12 basis
2023	\$ 4.8M	10x	\$47.9M	44.2%
2024	\$ 5.3M	11x (1)	\$58.1M	21.2%
2025	\$ 9.0M	11x	\$99.3M	70.9% (2)
2026	\$11.9M	12x	\$142.6M	43.6% 5-year projection

Growth via Crowd Funding

LandQuire is intent on launching in 2022 its first crowdfunding capital raise to purchase a Portfolio of land assets. We expect 2023 to be when crowdfunding (Reg CF) funding will become a large, automated part of our retail, real estate investment program. Our intention is to dramatically reduce the minimum investment thresholds while increasing our outreach to a larger pool of unaccredited investors.

(1) LandQuire is a disruptive real estate investment company and a data-technology company, as well as a planned prop-tech digital smart contract company in the blockchain. Valuation multiples can range to mid teens x 12 month forward projected EBITDA or NOI. Our modeling takes the valuation from 10x multiple in current year plus year two to 11x model year three and four, and to 12x multiple in operating year five... timed for certain capital events and technology expansions.

(2) Seven subdivisions (Roanoke, VA (2); Dayton, OH (2); Chattanooga, TN (1); Mobile, AL (1); Bowie, TX (1)) plus one large hotels & retail mixed-use parcel (Yuma, AZ (1)), owned by LandQuire are expected to dispose/resell at the ending of the special purpose vehicle (SPV) LLC's terms, which is when investment in these are projected to be wound up. These are high multiple exit opportunities because of the subdivisions emerging from single or small multiple of residentially zoned parcels, and the single parcel, large footprint commercially zoned Yuma, AZ site should follow the same schedule 'white label' sales (subscription sales) of our technologies as SaaS conservatively projected to be open and selling to the industries.

NO Consideration for Blockchain performance included in any financial projections.

LandQuire is under engagement with SolidBlock, a global leader in Fin-Tech and Prop-Tech to create a smart contract tokenization of land assets. Slides later in this deck will express this program. Our intention is to tokenize land assets to be purchased and to open the company for broad, tokenized investment on a 'stablecoin' basis (convertible to fiat currency USD).



LandQuire

ACRES OF EXPERIENCE

USES OF FUNDS

Category	Amount	%
Technology & Data: (1)	\$350k	10%
6 Month Operating Expense Reserve: (2)	\$1.2M	34%
Property Entitlement:	\$250k	7%
Marketing:	\$250k	7%
Promissory Note debt retirement: (3)	\$1.0M	29%
Staff expansion:	\$200k	6%
Office expansion & Cap-Expense	\$200k	6%
Total	\$3.5M	100%

Variantes del Logo



LandQuire

ACRES OF EXPERIENCE

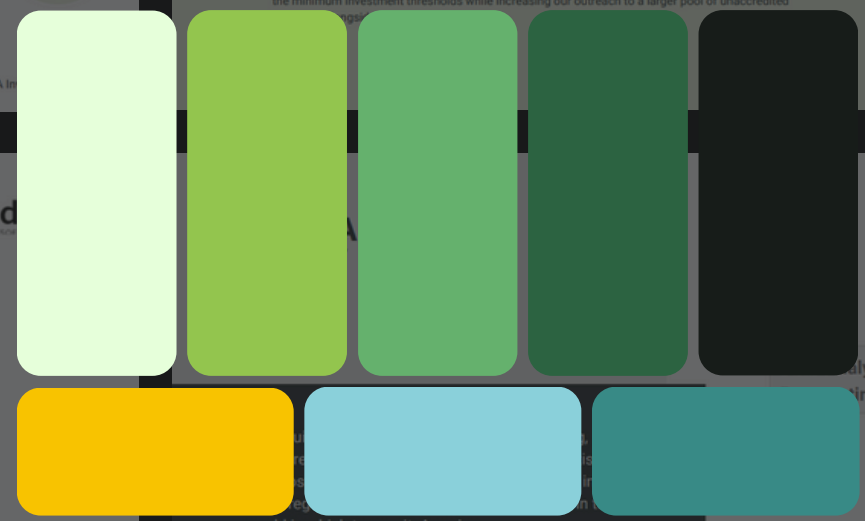


Best Investment for Appreciation, Diversification & Resilience Against Inflation

- ✓ **Appreciation:** 11% per year since 1970 (5 decades)
- ✓ **Market Size:** 2.3B acres Privately Owned
- ✓ **Buy-Sell Volume:** \$3T annual land sales in America
- ✓ **US SFR Inventory:** 5.5M Single Family (SFR) Home Shortfall
- ✓ **Industry Outlook:** AAA ~ Short and Long-Term Diversification Hedge Against Inflation SFR Shortfall ~ Builders Need Land

BUY LAND, THEY ARE NOT MAKING IT ANYMORE"

- MARK TWAIN



Mont

Regular Bold

Gilroy

Light Regular Bold

LANDQUIRE: BY THE NUMBERS

LAND PURCHASED
acres 1200
parcels 150
parcel Yield 500 (includes subdivisions)

ASSET VALUE
18M
D Debt
LandQuire owns 58% Investors 42%

\$10M Investment
7 Funded Portfolio
30 Funded Joint Venture

TERM	EBITDA	MULTIPLE	VALUATION	% VALUATION +/-
2022	\$ 3.3M	10x	\$33.2M	-0- Forward 12 basis

DEAL PIPELINE: PORTFOLIO OFFERINGS

LAND INVESTMENT PORTFOLIO

Performance: 7 Funded, \$6.6M Invested

Name: LQ Virginia LLC; LQ Portfolio I, II, III LLC, etc.
Domicile: Per Blue Sky Laws - ex. Virginia, North Carolina, Florida
Offering: Subscription Reg. D, 506b Exemption
Raise: Varied - from \$250k to \$1.4M
Investment: Minimum \$50k, \$100k etc.
Open Offering: @ Completion of Parcel Mix Selection Investment Committee decides PPM, Unit Subsc. Agreement, Venture Agreement SPV LLC entity Formed, Bank Account set
Intake: Attorney IOLTA Escrow Account
Close Offering: @ Receipt of Raise Capital Parcels Through Due Diligence and Purchased
Purpose: Buy Groupings of Land Parcels for Arbitrage
Parties: 35 Investors @ max as Common Unit Holders Limit on # of Unaccredited Investors
Participation: Split of Profits @ Resale (net of closing costs) Can Include a Preferred Return Approx. Est. 15% IRR (unlevered) and +20% ROI
Term: Three Year plus 1 Year Ext. Option unless all Parcels are Resold
Exit: @ Resale of All Parcels and Distribution of Profits

Features of the Offering

Our original investment Offering. Grouped parcels for risk mitigation and timing of resale. Often include a subdivision opportunity with a high estimated multiple at resale (take longer to complete) and a blend of residential and commercial parcel lots. From our portfolio, we have identified 100+ of essential for investors, and we are

Isotype

DEAL PIPELINE: LQ PRIVATE VENTURES

Performance: 30 Funded, \$3.4M Invested

Name: LQ Private Ventures 1 LLC to 28 and so on...
Domicile: Florida
Offering: Joint Venture
Raise: \$50k to \$200k Range
Investment: @ Raise Value
Open Offering: First Come, First Served - Qualified Investor www.landquiredeals.com marketplace
Intake: Attorney IOLTA Escrow Account
Close Offering: @ Signed JV Agreement & Capital Invested
Purpose: Buy Land Parcel or Grouping of Parcels for Arbitrage
Parties: 1 Investor - max of 2 in tripartite - No Subscription
Participation: 50/50 split of Profits @ Resale (net of closing costs) No Preferred Return Approx. Est. 15% IRR (unlevered) and +20% ROI
Term: Three Year unless Parcel(s) Sell
Exit: @ Resale of All Parcels and Distribution of Profits
Public/Private: Private

Features of the Offering

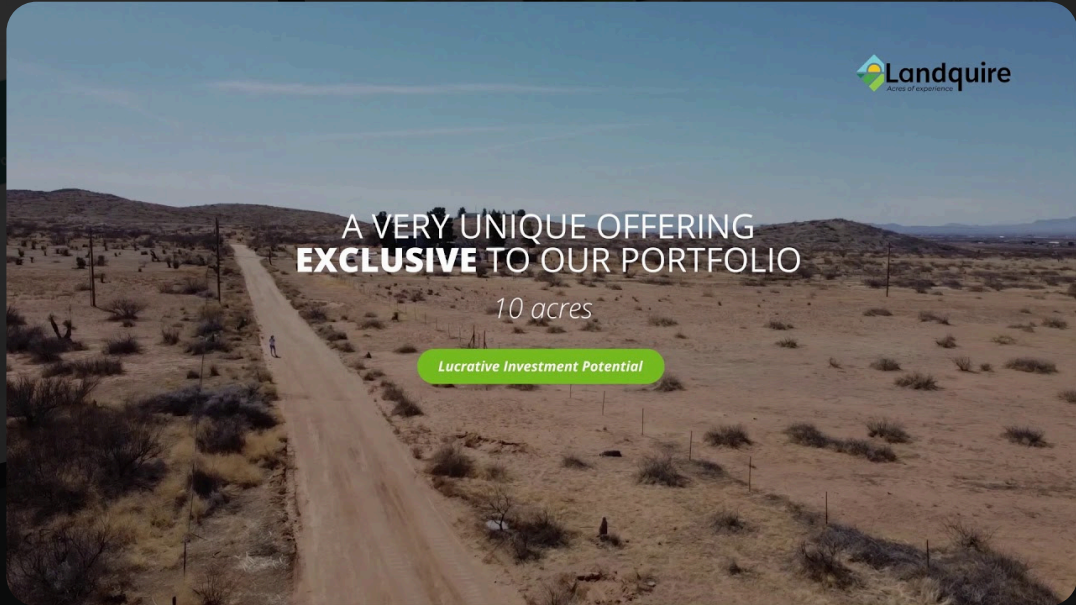
LandQuire Private Ventures was created in Q4 2021 as a solution for the investor who wanted to invest in land, yet with full ownership/partnership with LandQuire, and not via subscription pro-rata. Smaller groupings and costs - range from \$50k to \$200k of purchase expense. First come first served - and offered via LandQuire new retail web marketplace www.landquiredeals.com - Investors responded fast and 16 were offered and



1.59 ACRES
CECIL, MD

**1.59 Acres - 118 School House Ln,
Conowingo, MD**

WATCH NOW



A VERY UNIQUE OFFERING
EXCLUSIVE TO OUR PORTFOLIO

10 acres

Lucrative Investment Potential

**Willcox, AZ amazing
development opportunity**

WATCH NOW

SERIES A INVESTMENT

LandQuire Poised for Growth
Acres of New Opportunity for our Investors

- Investment Series A / Corporate Equity
- Entity LandQuire Management LLC
- Placement SPV LQM Series A Charter LLC
- Capital Raise **\$3,500,000**
- Equity Exchange 10.6%
- Valuation Multiple 10x EBITDA
- Forward 12 Months Valuation **\$33,200,000**

LandQuire
A STORY OF EXPERIENCE

70 Full-time staff
4 Offices
4 Distinct teams

TEAMWORK

LANDQUIRE: BY THE NUMBERS

\$10M Investment
7 Funded Portfolio
30 Funded Joint Venture

ASSET VALUE
\$18M
\$0 Debt

LandQuire owns 58% Investors 42%

(Preferred split of proceeds, mix of preferred return with 30% profit split on resale and 50% profit split with no preferred return)

TERM	EBITDA	MULTIPLE	VALUATION	% VALUATION +/-
2022	\$ 3.3M	10x	\$33.2M	-0- Forward 12 basis

DEAL PIPELINE: PORTFOLIO OFFERINGS

Performance: 7 Funded, \$6.8M Invested

Name: LQ Virginia LLC, LQ Portfolio L, R, III LLC, etc.
Domicile: The Blue Bay Leas - ex. Virginia, North Carolina, Florida
Offering: Subscription Reg. S, 508k Exemption
Raise: Varied - from \$250k to \$1.4M
Investment: Minimum \$50k, \$150k etc.
Open Offering: @ Completion of Parcel Mix Selection Investment Committee decides PPM Unit Subj. Agreement, Venture Agreement SPV LLC entity formed, Bank Account set
Close Offering: Attorney NCTA Escrow Account
Initial: @ Receipt of Raise Capital Parcels Through Due Diligence and Purchased
Close Offering: Buy Groupings of Land Parcels for Arbitrage
Parties: 35 Investors @ max as Common Unit Holders Limit on # of Unaccredited Investors
Participate: Split of Profits @ Resale (net of closing costs) Can include a Preferred Return Approx. Est. 15% IRR (unlevered) and +20% ROI
Term: Three Year plus 1 Year Ext. Option unless All Parcels are Resold
Exit: @ Resale of All Parcels and Distribution of Profits.
Public/Private: Private

DEAL PIPELINE: LQ PRIVATE VENTURES

Performance: 30 Funded, \$1.8M Invested

Name: LQ Private Ventures 1 LLC to 28 and so on...
Domicile: Florida
Offering: Joint Venture
Raise: \$50k to \$200k Range
Investment: @ Raise Value
Open Offering: First Come, First Served - Qualified Investor
Close Offering: www.landquiredeals.com/marketing
Purpose: Buy Land Parcel or Grouping of Parcels for Arbitrage
Parties: 1 Investor - max of 2 in triplicate - No Subscription
Participate: 50/50 split of Profits @ Resale (net of closing costs) No Preferred Return Approx. Est. 15% IRR (unlevered) and +20% ROI
Term: Three Year unless Parcel(s) Sell
Exit: @ Resale of All Parcels and Distribution of Profits.
Public/Private: Private

THE LANDQUIRE STORY

LandQuire is a Story of Applied Data Engineering, Entrepreneurship, and Geospatial Industry Expertise to the most ancient of investments - open Land - in the most regulated, documented, and safe country in the world in which to own it: America.

Data Analytics & Prospecting
Acquisitions
Property Management & Disposition
Investor Relation

70 Full-time staff
4 Offices
4 Distinct teams



TURN IT SIMPLE.

eon

Turn it simple.